

# HATCH SYSTEM

EMERGENCY TELESCOPIC LADDER



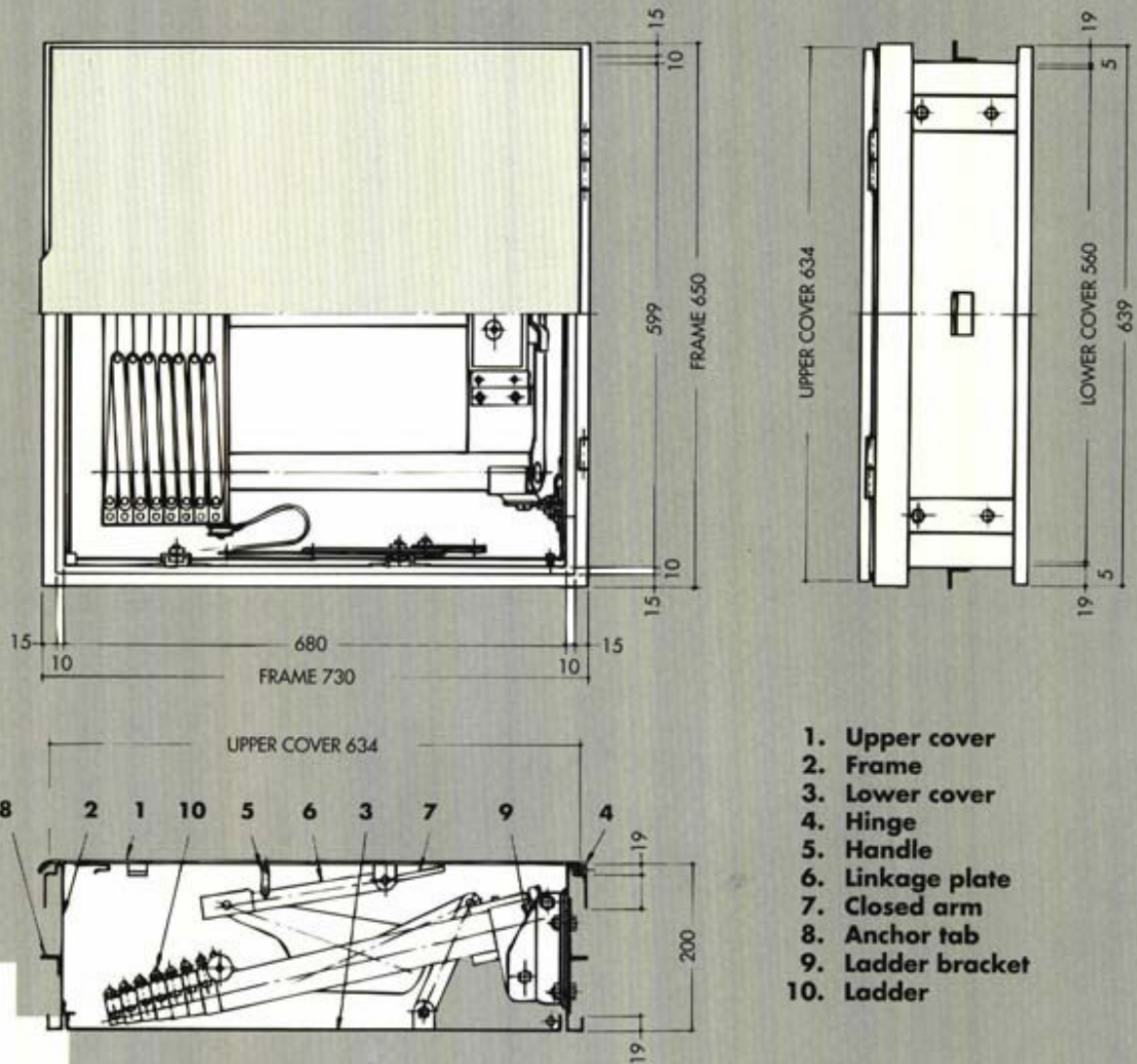
## **B A J system design Ltd**

45 A & B Hartlebury Trading Estate,  
Nr. Kidderminster, Worcestershire DY10 4JB  
Tel: 01299 250052 Fax: 01299 251153  
[www.bajsd.co.uk](http://www.bajsd.co.uk) email [sales @bajsd.co.uk](mailto:sales@bajsd.co.uk)



# HATCH SYSTEM

## EMERGENCY TELESCOPIC LADDER • FRAME



### EASY TO USE

When you need to escape, open the upper cover. This causes the lower cover to open automatically. Check that the area below is clear and step on the ladder release switch.

### SAFE AND RIGID ESCAPE ROUTE

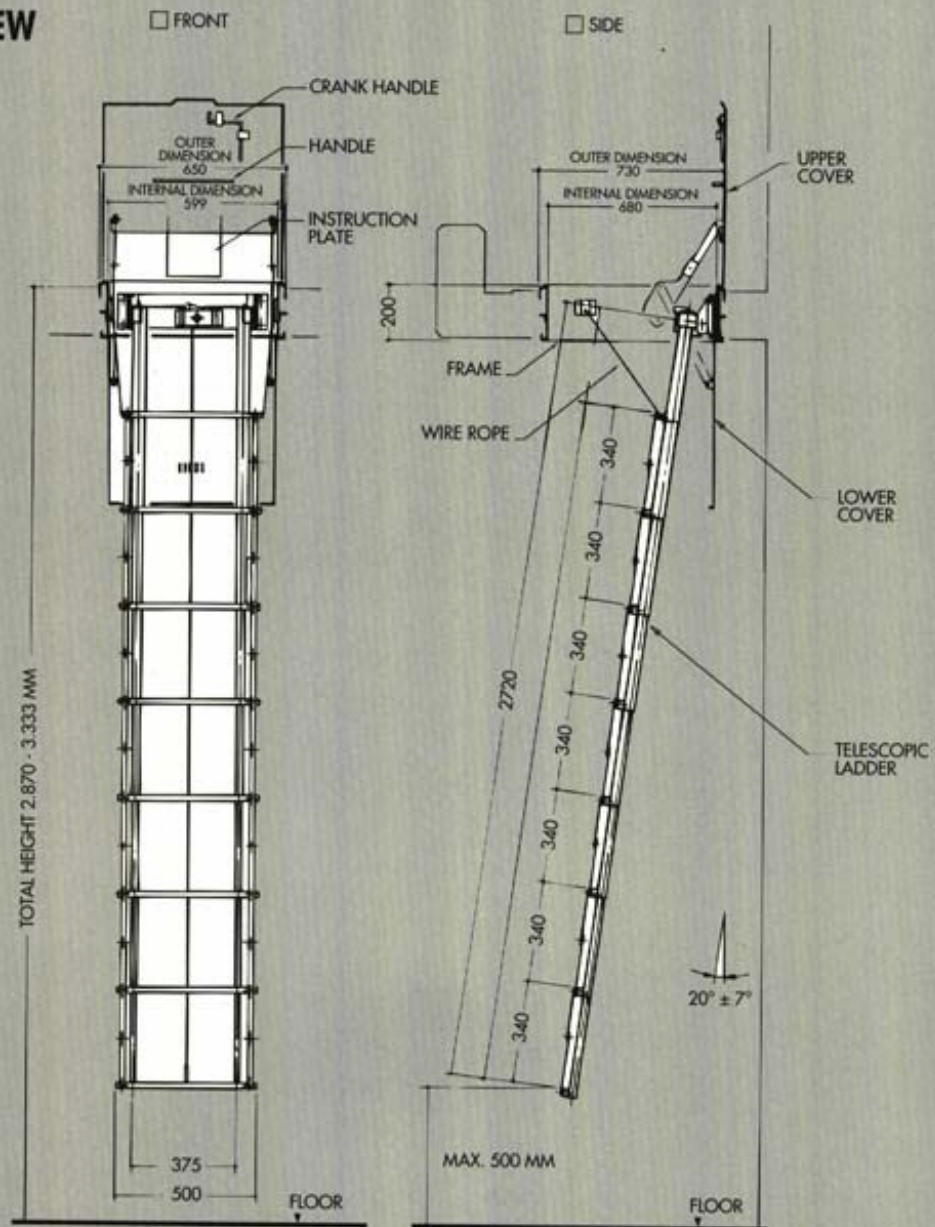
The telescopic **Hatch System** ladder is designed to be sturdy and rigid when it is extended. People of almost any age can evacuate quickly and safely.

### DURABLE CONSTRUCTION

The telescopic **Hatch System** ladders are manufactured of cathodic E/D coated steel. This coating process assures high durability in a variety of climates. Each unit is tested at the factory to assure precise construction.

### FITS NEW AND EXISTING BUILDINGS.

# GENERAL VIEW



## SPECIFICATIONS AND DIMENSIONS

MODEL	STEPS	LADDER LENGTH (mm)	FLOOR HEIGHT (mm)	LADDER WEIGHT (Kilos)
T-100/5	5	1.710	1.880 - 2.340	11,35
T-100/6	6	2.055	2.210 - 2.670	12,70
T-100/7	7	2.380	2.540 - 3.000	13,60
T-100/8	8	2.720	2.870 - 3.330	14,50
T-100/9	9	3.060	3.200 - 3.660	21,30
T-100/10	10	3.390	3.560 - 3.990	22,70
T-100/11	11	3.740	3.890 - 4.340	24,00

### CATHODIC E/D COAT PROTECTIV FINISH

Thickness : 20 microns  
 Hardness : 3 h  
 Anti-shock degree : 50 cm.

### TESTING

**Water resistance**  
 over 500 hours under 40°C

**Humidity**  
 over 500 hours under 50° (RH 98%)

**Salt water spray test**  
 over 800 hours JIS Z 2371 (35°C - 5%)

## HATCH SYSTEM



### OPERATION

- 1.** Lift the upper cover to its locked position. This will automatically open the lower cover.
- 2.** Check below for a clear area. Step on the ladder release switch.
- 3.** The ladder will lower automatically. Face the open hatch cover and descend.
- 4.** To close, wind the ladder into its recessed position with the crank handle (included). Close the upper cover and the entire unit stores automatically.

FIRE ESCAPE • MANUFACTURING TO ORDER

### **B A J system design Ltd**

45 A & B Hartlebury Trading Estate,  
Nr. Kidderminster, Worcestershire DY10 4JB  
Tel: 01299 250052 Fax: 01299 251153  
www.bajsd.co.uk email sales @bajsd.co.uk



# B.A.J. system design Ltd

45 A & B Hartlebury Trading Estate, Hartlebury, Nr Kidderminster, Worcestershire, DY10 4JB

Telephone: 01299 250052 Fax: 01299 251153

## JOMY HATCH SYSTEM OPTIONS

STAINLESS STEEL (rust proof) HATCH			DIMENSIONS OF FRAME		
STEPS No.	PRICE (£)	LADDER HT. (M)	INNER (mm)	OUTER (mm)	DEPTH (mm)
5		1.710	600x680	650x730	200
6		2.055	”	”	”
7		2.380	”	”	”
8		2.720	”	”	”
9		3.060	”	”	”
10		3.390	”	”	”
11		3.740	”	”	”

### Additional Costs:

PACKING & DELIVERY : £

INSTALLATION : Prices quoted are for the supply only. We will be happy to quote for specific installation.

SITE VISITS : P.O.A.

V.A.T : Standard Rate will be applied to all prices.

### PAYMENT TERMS:

Payment with Order or by our Standard Credit Terms (nett monthly account), subject to approval.

Prices quoted are not firm and are subject to change without notice.

Written quotations are available by request and will be firm for 30 days only.

All Goods and/or Services are supplied subject to our Terms & Conditions of Trading (available on request).

Vat Reg. No. 436 7211 57 Registered in England No. 3409633 Registered Office as above.

**All goods are supplied on our Terms and Conditions and NOT those of our Customer.**

### **Payment Terms**

#### **Discounts**

We require payment in full with all first orders, thereafter Nett Monthly Account (subject to approval).

Trade / Contract discounts are not offered on first orders and are at the discretion of B.A.J at all times

Main Contractors Discounts are not included for and if required should be added by the contractor to the prices specified.

All prices are Nett and do not allow for retentions. Retentions will not be accepted.

#### **Site Visits**

Are not included for in our price lists and if required will be charged at £30.00 Lump Sum plus £2.00 per mile, chargeable in advance. This charge will be refunded at a rate of 10% of any contract value up to the total site visit charge. Where an overnight stay is necessary this will be added but will not be refundable.

#### **Delivery & Off Loading**

All Deliveries are made by Carrier using a Standard Next Day Service to the address shown on the Customers Order. The Driver is NOT responsible for off-loading the vehicle.

An authorized person must be available at the delivery address to accept the goods and shortages must be reported within 3 days of delivery.

#### **Installation**

Goods are normally supplied for installation by others and Unless specified, installation is not included.

All products should be Installed in accordance with the instructions provided and using the appropriate fixings for the supporting structure.

#### **Powder Coating**

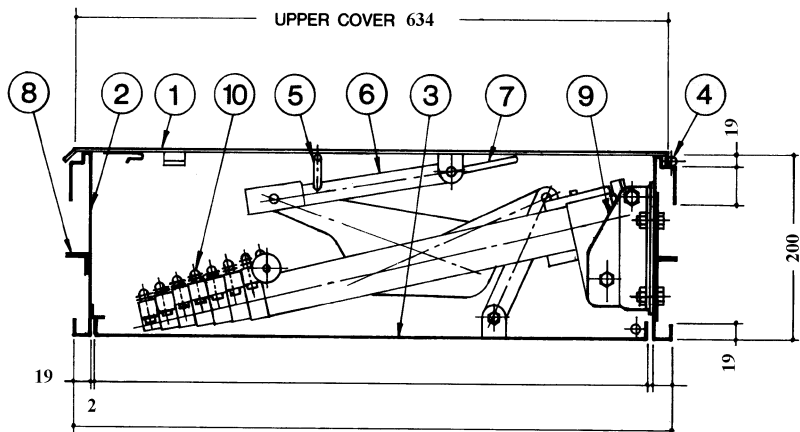
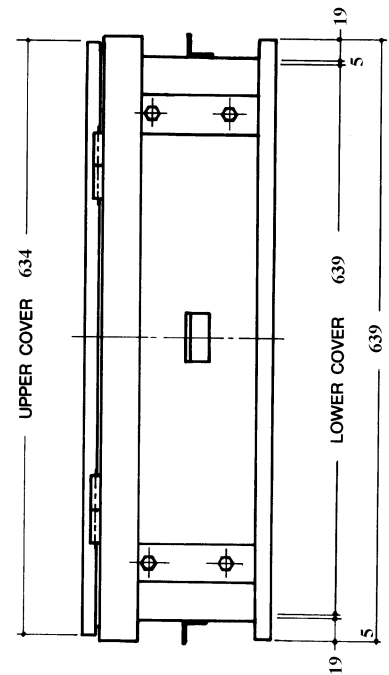
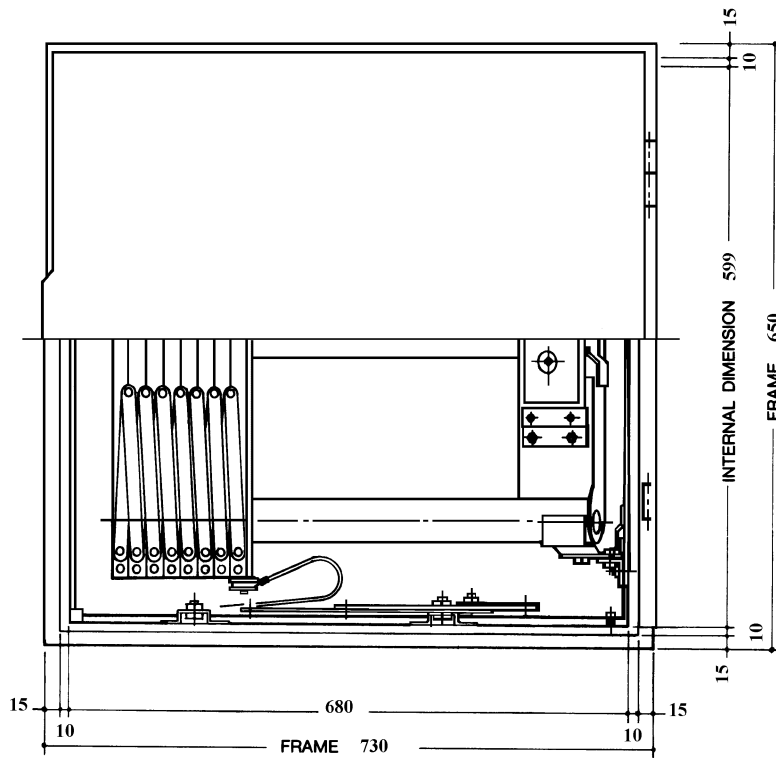
Where applicable, any finishes other than anodised aluminium are applied on top of the anodised surface and are only applied to the faces which remain visible when not in operation.

Quotations are based upon the information available at the time of quoting and upon the enquirers specifications unless site measurements have been taken by a representative of B.A.J. All quotations are valid for 30 days to order with a further 30 days for completion unless specified otherwise and do not include V.A.T. or any other Taxes.

#### **Liability**

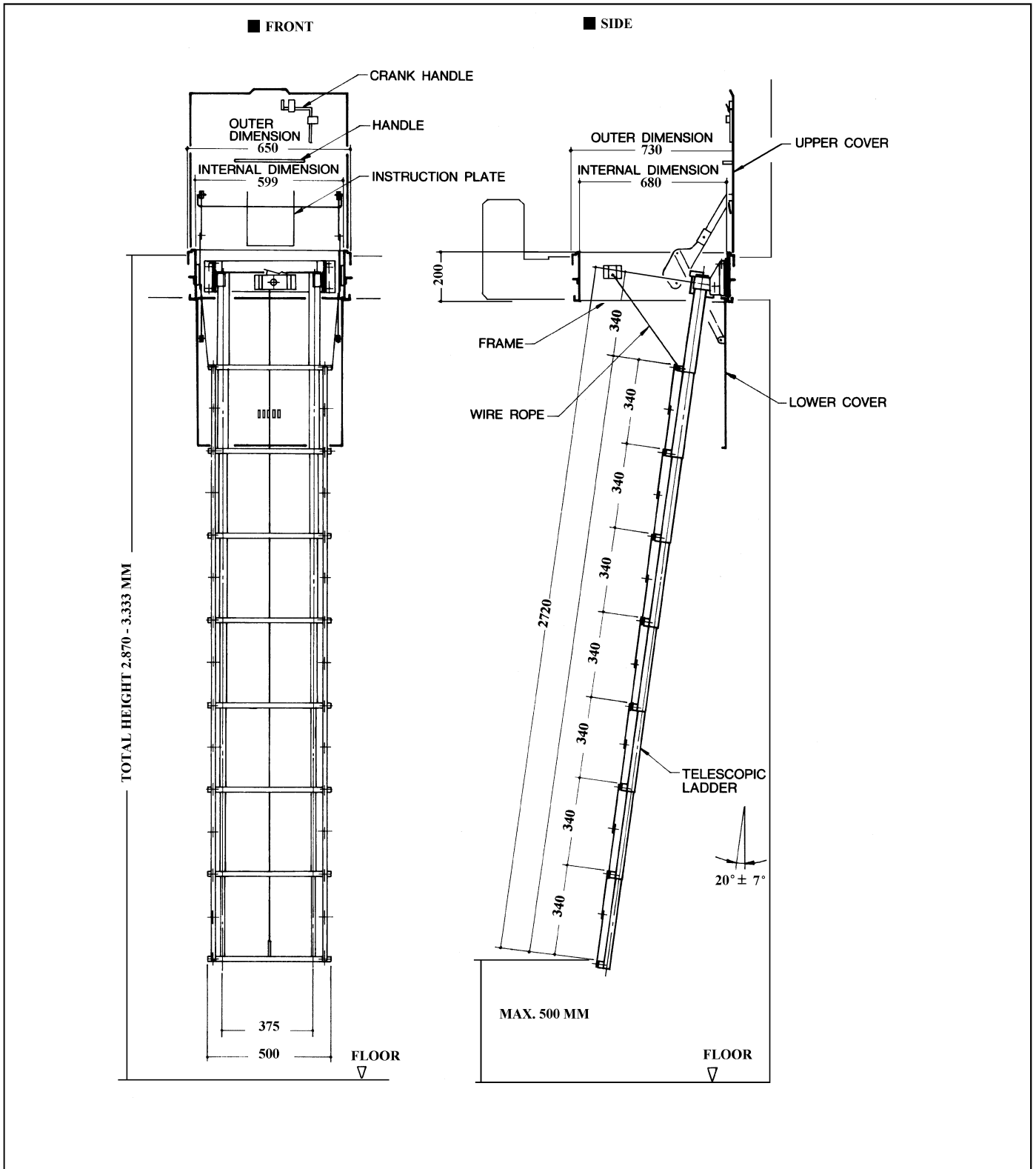
We will make every effort to comply with our customers delivery requirements and any defects or shortages will be resolved as soon as possible following a customers report, but we do not accept any liability for consequential costs resulting from such problems.

# Telescopic Hatch System



- ① UPPER COVER
- ② FRAME
- ③ LOWER COVER
- ④ HINGE
- ⑤ HANDLE
- ⑥ LINKAGE PLATE
- ⑦ CLOSED ARM
- ⑧ ANCHOR TAB
- ⑨ LADDER BRACKET
- ⑩ LADDER

# General View Of Hatch System







# Hatch System

